

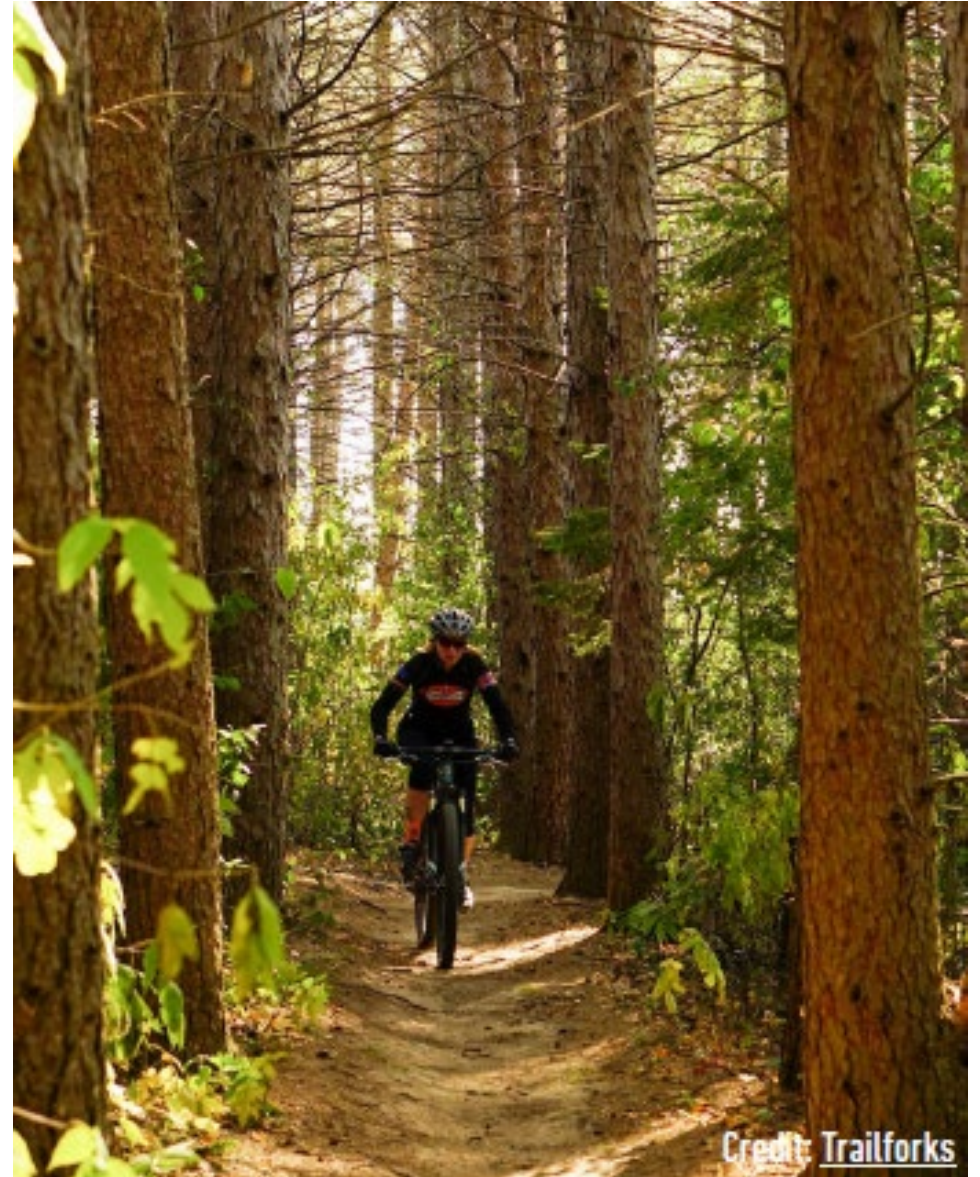
CITY OF VIROQUA Bicycle and Pedestrian Plan and SRTS* Addendum

*Safe Routes to School



Today's meeting

- Purpose of plan
- Schedule
- Preliminary background research results
- Advisory Committee membership
(committee input requested)
- Public engagement plan
(committee approval requested)

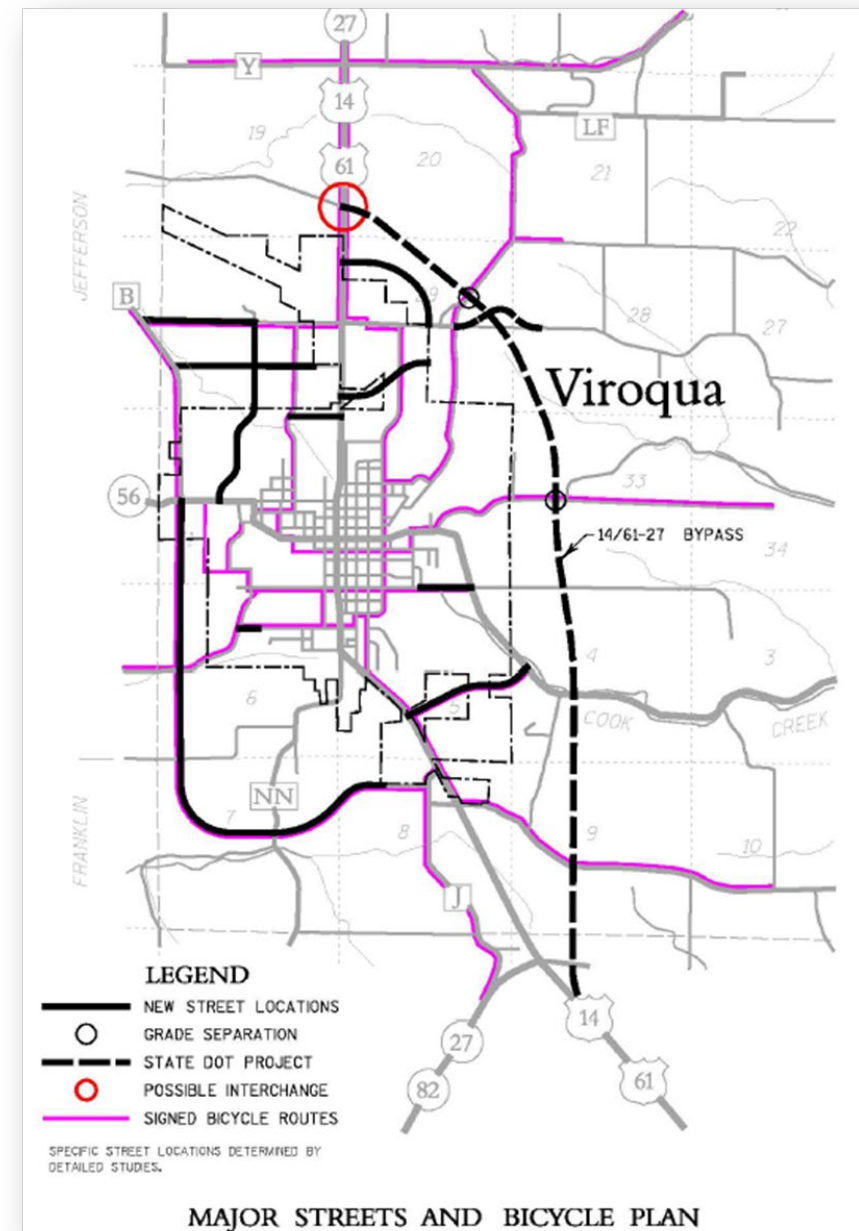


Plan purpose

Help achieve some of the City's adopted Comprehensive Plan policies:

“Plan for the development of local and regional bicycle/pedestrian trails and paths along both local and intercommunity links and local designated bikeways including connections to local schools, parks, entertainment and commercial areas.”

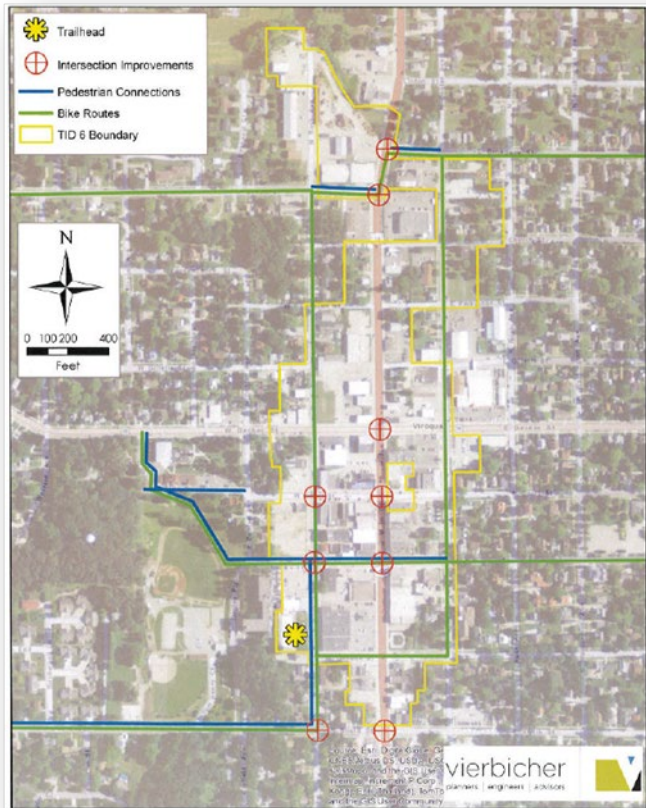
“Develop and implement a city sidewalk/pedestrian plan.”



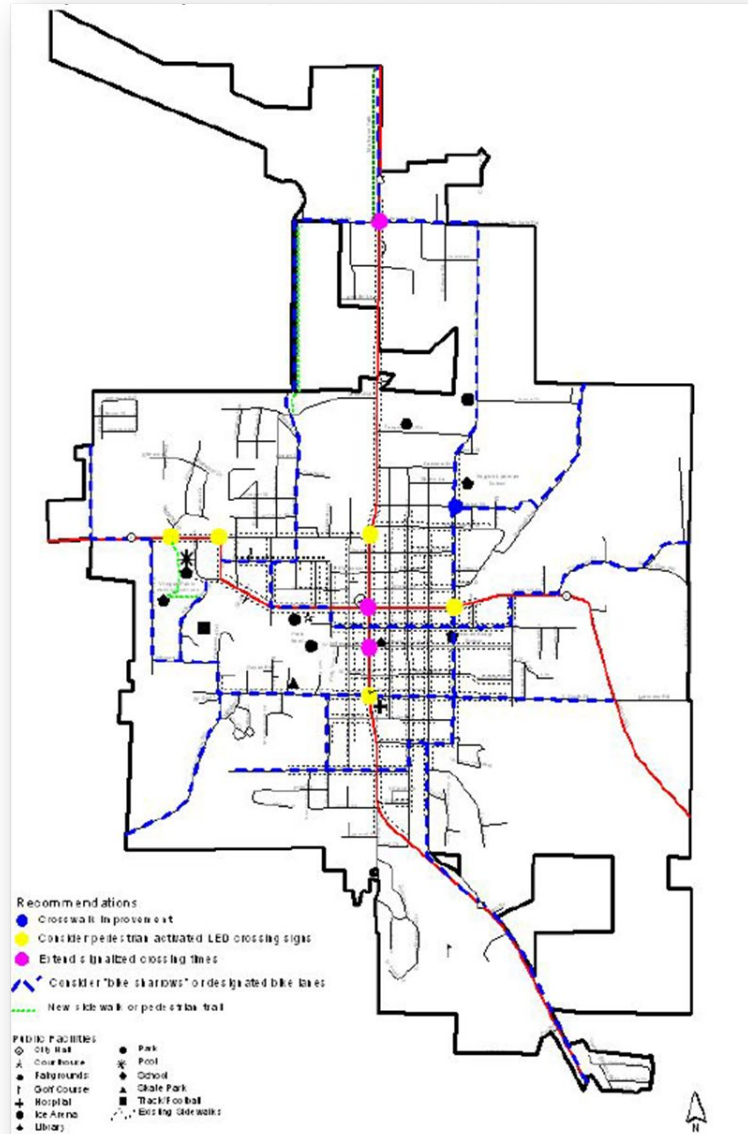
City of Viroqua Bicycle and Pedestrian Plan and SRTS Addendum Schedule

	September	October	November	December	January	February	March	April	May
Task 1: Project Management									
1.1 Project Management Plan									
1.2 Bi-weekly Meetings									
1.3 Monthly Invoices									
Task 2: Review of Existing Demographics, Facilities, and Plans									
2.1 Demographics and Facilities									
2.2 Plans, Programs, and Other Documents									
Task 3: Bike and Pedestrian Suitability Analysis									
3.1 Bike and Pedestrian Suitability Analysis									
Task 4: Public Engagement									
4.1 Public Engagement Plan									
4.2 City Council Informational Presentation									
4.3 Advisory Committee									
4.4 Public Meetings, Focus Groups, and Online Survey									
Task 5: Bike and Pedestrian Plan and SRTS Addendum									
5.1 Goals, Objectives, Policies									
5.2 Network									
5.3 Implementation									
5.4 Draft and Final Plan									
Toole Design On-Site (may occur more often due to close proximity of Project Manager)									

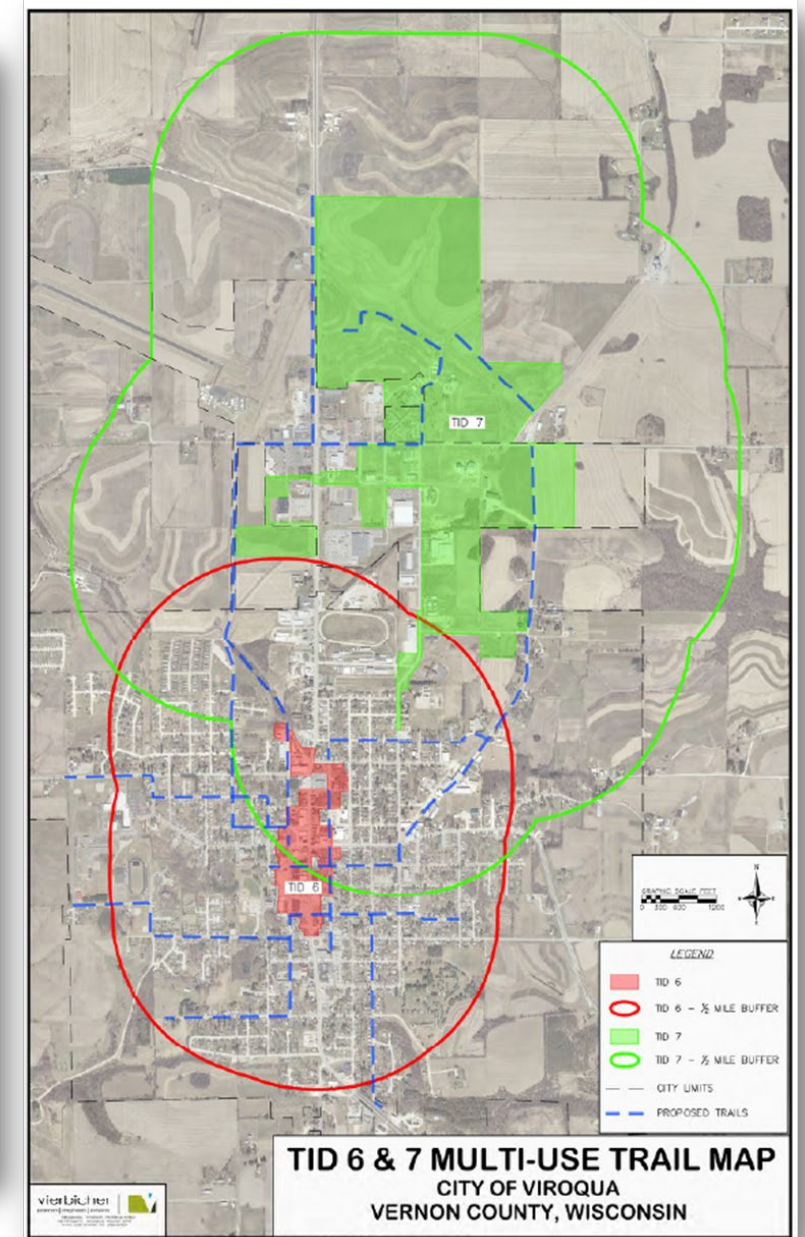
Additional previous bicycle and pedestrian facility planning



TID No. 6 Project Plan (2015) shows bike routes in green lines and pedestrian connections in blue lines



Safe Routes to School Plan (2011) shows “possible bike sharrows and designated bike lanes” in blue dashed lines, a new sidewalk or pedestrian trail in green lines, and pedestrian crossing improvements in yellow, blue, and pink dots



TID No. 7 Project Plan (2019) shows proposed trails in blue dashed lines

Accomplishments



Rock Avenue Shared Use Path



Viroqua Westby Trail



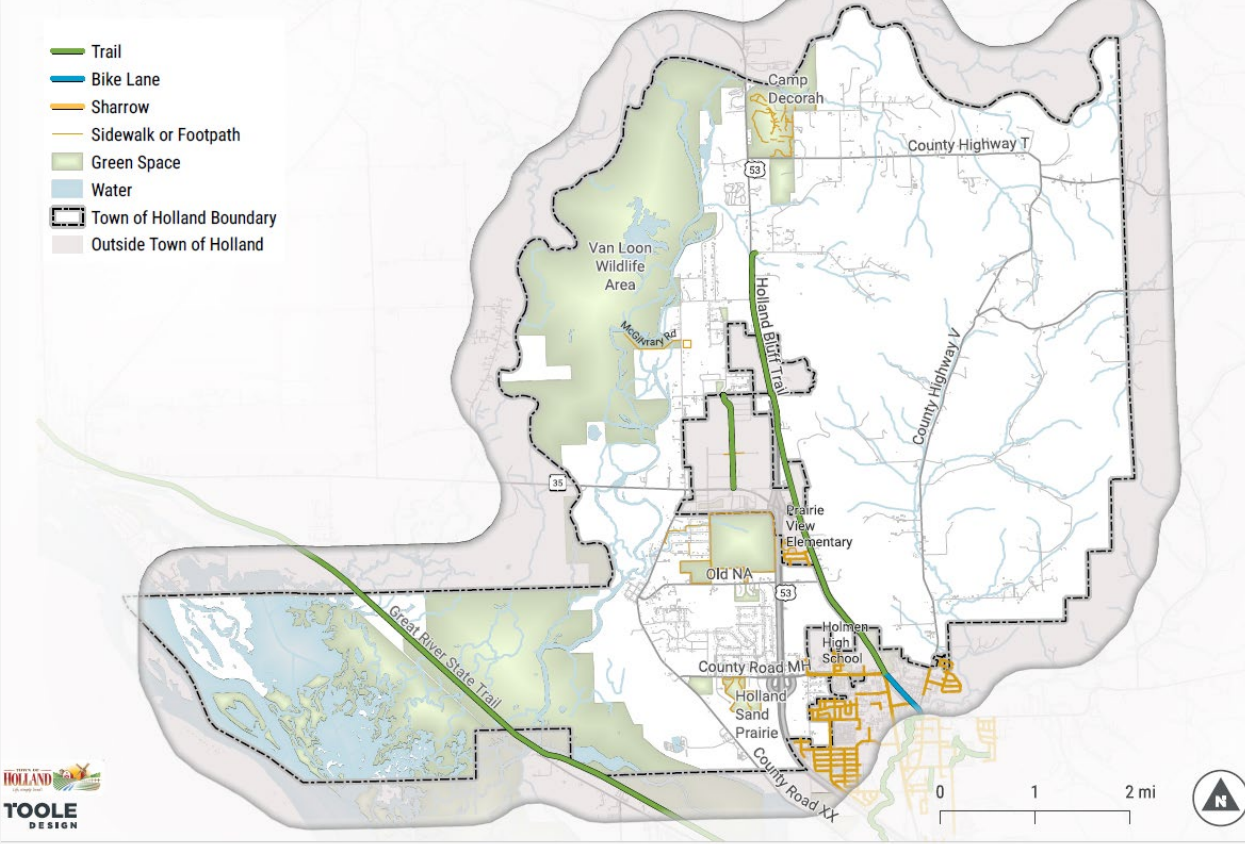
Pedestrian Rapid Flash Beacons



N East Avenue Bike Lanes

Existing facility mapping

Existing Bicycle and Pedestrian Facilities



Example map from the Town of Holland showing existing facilities

Sidewalk

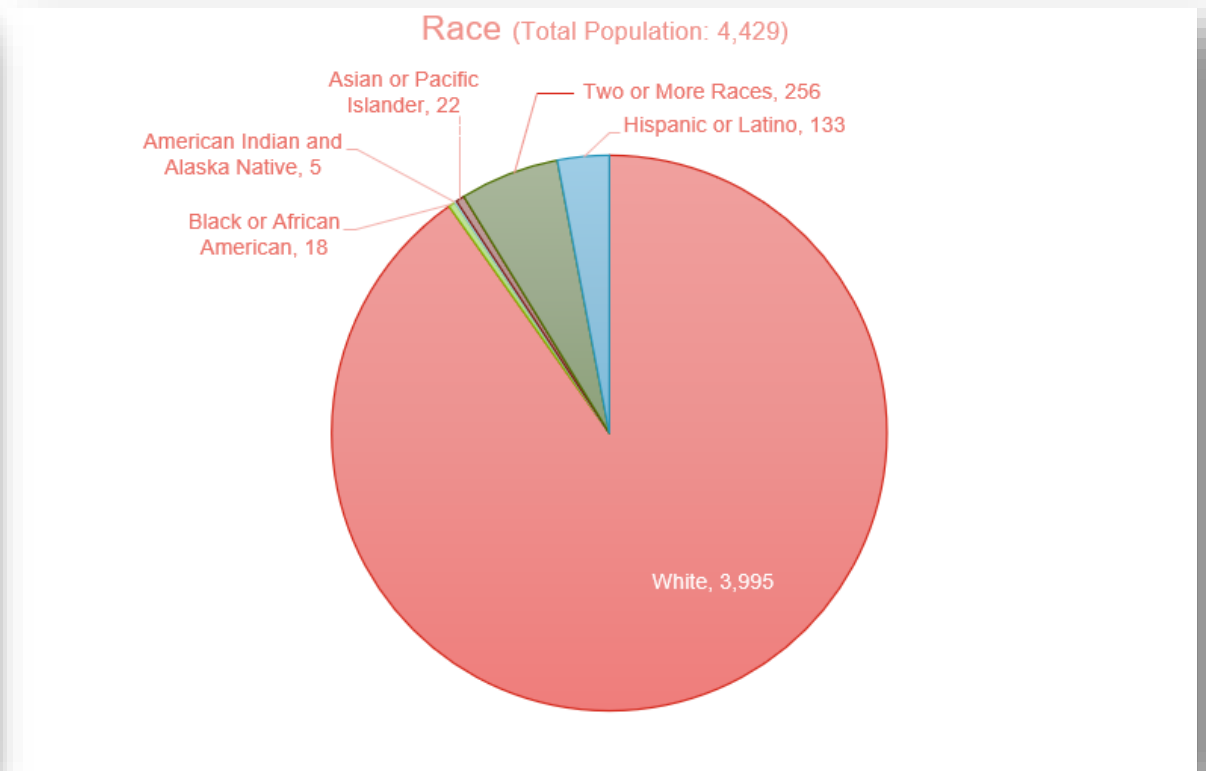
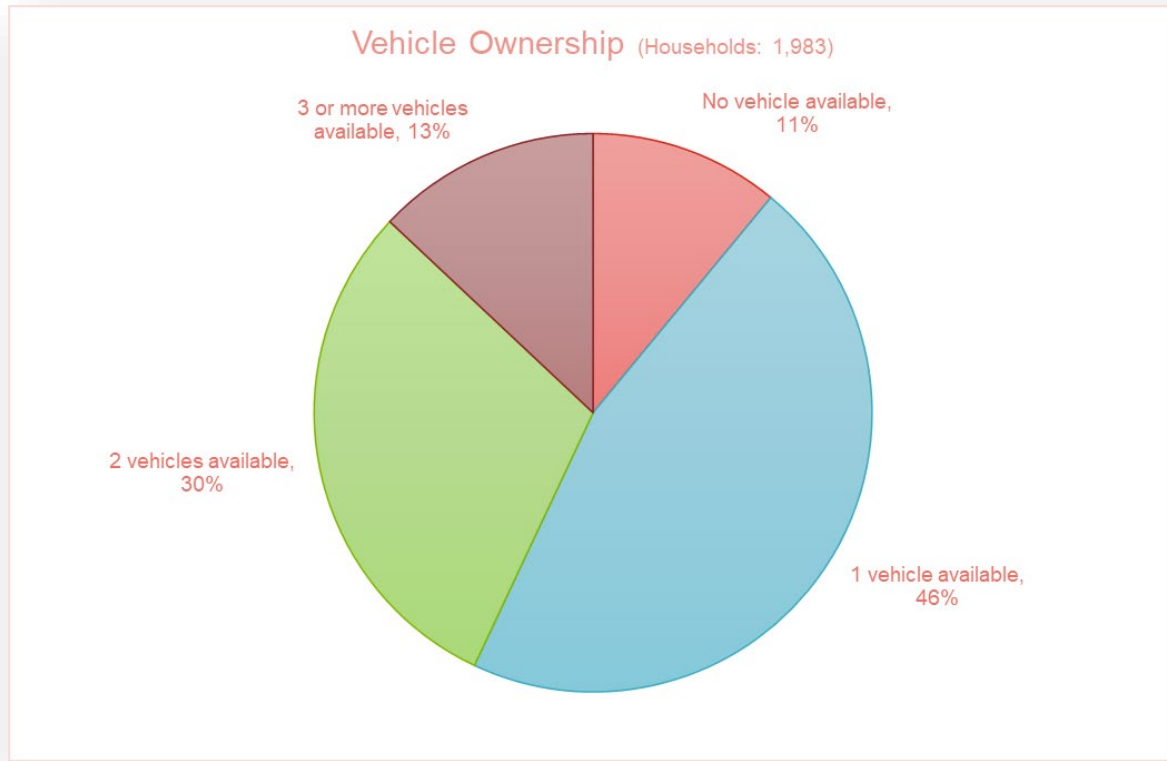


Shared Use Path



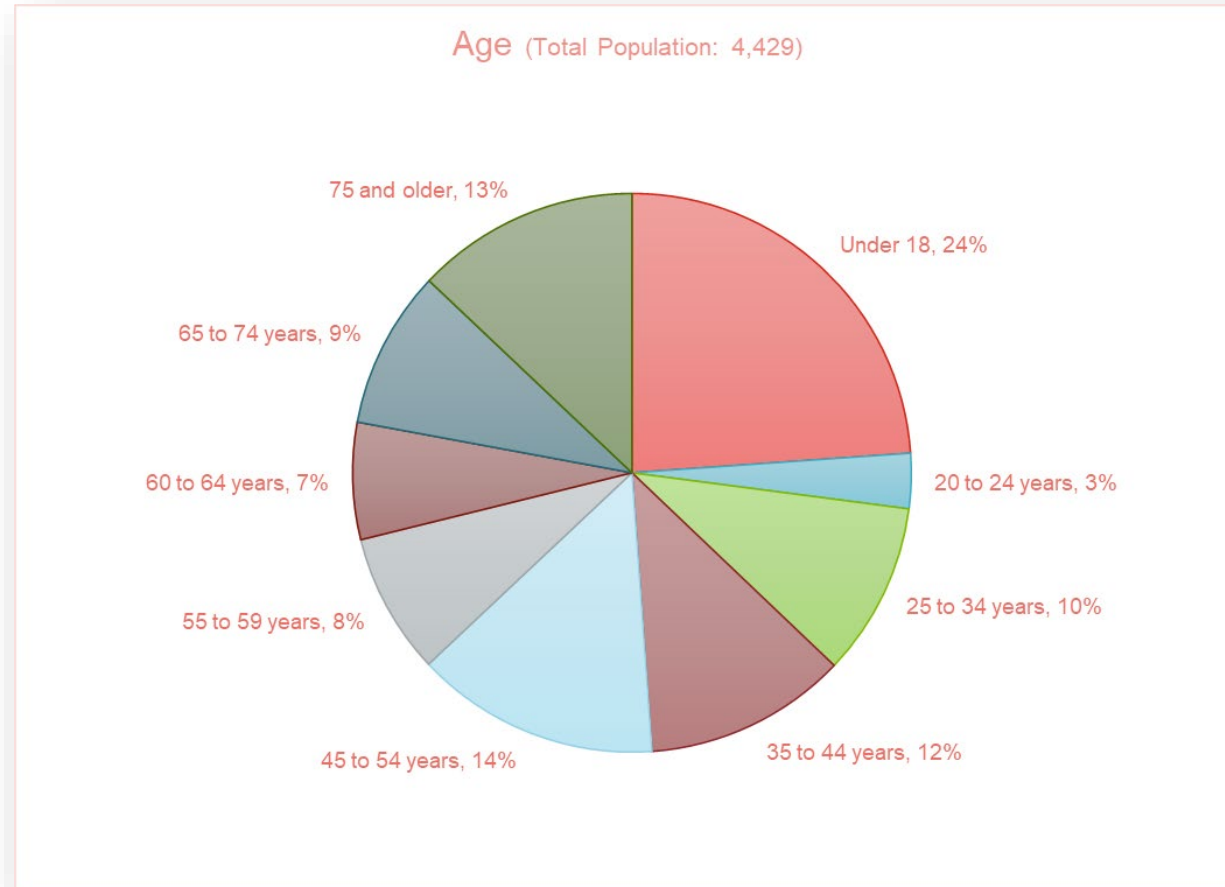
Images can be used to show facility type characteristics

Viroqua demographics



Asking survey respondents about vehicle ownership and race can determine if we're reaching an accurate cross section of Viroqua residents

Viroqua demographics



Asking survey respondents about age can determine if we're reaching an accurate cross section of Viroqua residents

Public Engagement Plan *(requesting committee approval)*

- Advisory committee
- Project website
- Online survey
- Open house
- Tabling event
- School-focused outreach



Advisory Committee (AC) Schedule & Role

Approximate meeting date	Meeting purpose
Late October/Early November	Share the planning process and schedule with the AC; Learn about goals, issues, and opportunities from AC
Late November/Early December	Solicit feedback from the AC on the recommended approach for public engagement
February	Review community feedback and ask the AC for input on how to prioritize projects
April	Review and comment on the draft plan

Potential Advisory Committee Members*

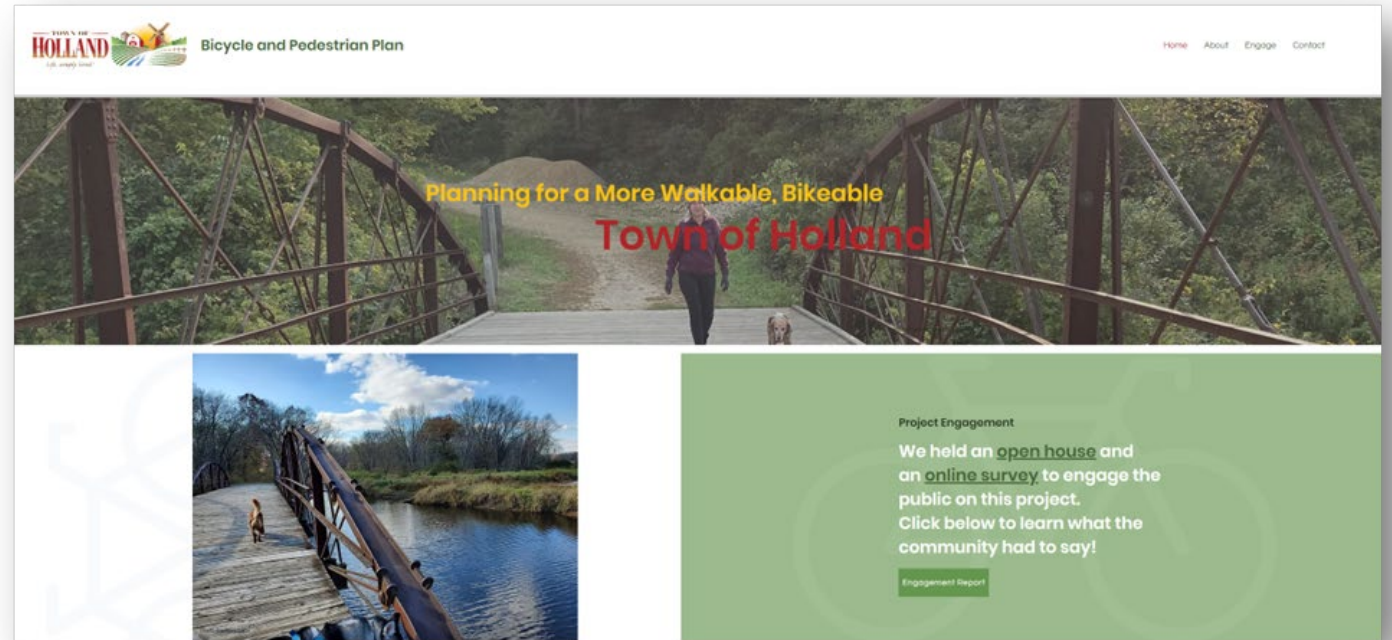
(requesting committee input; creation of committee is a mayoral responsibility)

1. Vernon Trails rep
2. Public Works Committee (i.e., City Council) member
3. High school student
4. A person who uses an assistive device
5. Parks & Recreation Director
6. Spanish speaking resident
7. Vernon County Health Department rep or UW Extension Food Wise employee
8. Vernon County Aging and Disability rep
9. Local business owner or Chamber Main Street employee/board member
10. Mayor Running or his appointee
11. Police Department rep (e.g., someone who handles traffic enforcement)
12. School staff representative (e.g., crossing guard, P.E. teacher, administrative staff)
13. Viroqua Tourism Commission member
14. City Plan Commission member
15. Resident who primarily walks for transportation
16. Resident who primarily bikes for transportation
17. Resident who primarily drives for transportation
18. A senior who regularly walks or bikes
19. Parent who walks or bikes their child to school
20. Historic Preservation Commission member

***We recommend that Advisory Committee members be reflective of the gender and racial diversity of Viroqua residents**

Project website

- Home
- About
- Engage
- Contact
- Email sign-up list



Screenshot of the Town of Holland Bicycle and Pedestrian Plan website

Online survey

- 30 – 45 days
- Survey on the left, mapping on the right

You and the Community

Overall, how safe do you feel while traveling along this segment of South George Mason Drive using the following types of transportation?

Walking/Rolling

Very Unsafe Unsafe Neutral Safe Very Unsafe Not Applicable

Taking Public Transit

Very Unsafe Unsafe Neutral Safe Very Unsafe Not Applicable

Riding a Bike

Very Unsafe Unsafe Neutral Safe Very Unsafe Not Applicable

Riding Scooter

Very Unsafe Unsafe Neutral Safe Very Unsafe Not Applicable

Driving a personal Vehicle

Very Unsafe Unsafe Neutral Safe Very Unsafe Not Applicable

A project is most important to me if it (RANK ORDER FOR AS MANY AS YOU WOULD LIKE):

- Slows down cars (traffic calming) →
- Adds crosswalks and safer intersections for pedestrians →
- Adds bicycle lanes →
- Adds bus lanes and improves bus stops →
- Reduces traffic congestion →
- Adds street trees and places to sit →

Drag and drop your selections here.

Don't want to share your information?
[Skip ahead to the map.](#)

Select Language ▼

Map Tiles © Google | Leaflet | TOOLE DESIGN

Online survey

- 30 – 45 days
- Survey on the left, mapping on the right
- Respondents can draw and comment on points, lines, and polygons

Walking and Biking in Example City

Use the "Comment on Proposals" tab to comment on proposed walking and biking routes as well as proposed spot improvements. Use the "Additional Feedback" tab to add your own points and lines with comments including any information you would like us to know about those locations

Comment on Proposals | Additional Feedback

Thanks for reviewing the current proposals for improving walking and biking!

See what others have shared.

All done? Simply close your browser when you're finished leaving comments.

Proposed Route Improvements
(Click a feature to leave a comment on it.)

- - On Street Bikeway
- - Sidewalk
- - Trail

Proposed Spot Improvement
(Click a feature to leave a comment on it)

- Crossing

The map displays a city area with various streets and landmarks. Proposed routes are shown as dashed lines in different colors: blue for On Street Bikeway, red for Sidewalk, and green for Trail. Spot improvements are marked with red dots, indicating crossing points. Landmarks such as Klaben Ford of Warren, Pineview Memorial Park, Eastwood Mall, Meijer, Olive Garden Italian, Best Buy, McDonald's, Giant Eagle Supermarket, Niki's Pub, Stoneyard Grill & Tavern, and Waddell Park are visible. The map also shows the Mahoning River and Warren Wildlife Area.

Online survey

- 30 – 45 days
- Survey on the left, mapping on the right
- Respondents can draw and comment on points, lines, and polygons
- Respondents can click on select intersections and give input

Screenshot of an online survey gathering input about bicycling and walking

Open house

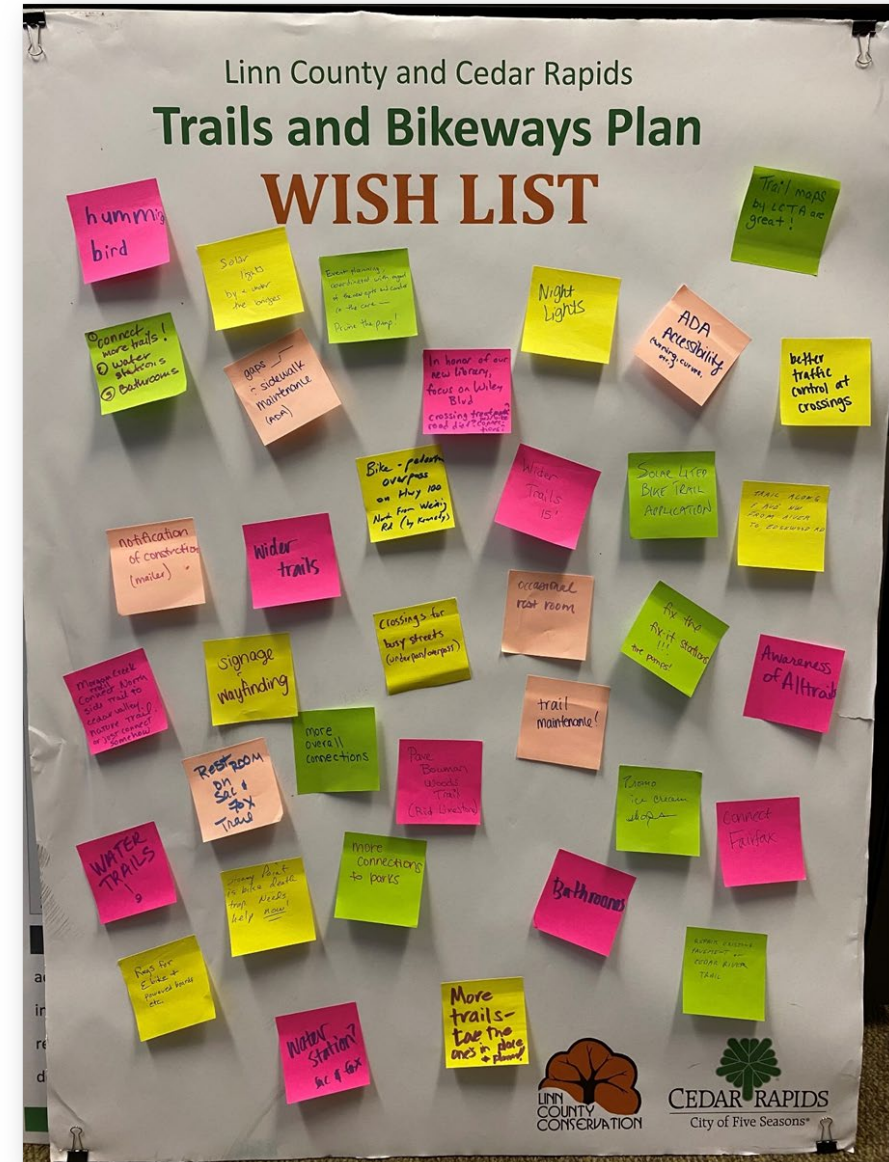
- Target date of mid-December at City Hall
- Materials will mimic online survey
- Great opportunity for residents to discuss ideas and questions with the project team



An open house for a trail plan in Polk County, WI

Tabling event

- **Location:** Viroqua Farmers' Market, McIntosh Memorial Library, Nelson's Agri-Center Ace Hardware
- **Date/Time:** Saturday, October 28th from 10am to 2pm
- **Format:** Share a blank poster that says, "Viroqua Bicycle, Pedestrian, and Safe Routes to School Wish List"



An example of a "wish list" completed by attendees of the Cedar Rapids, IA Farmers' Market

School-focused outreach

- **Option A (two group gatherings)**
 - Meeting to share observations, ideas, questions
 - Walk along a route to generate ideas for improvement
- **Option B (one online survey)**
 - Tailored to kids
 - Sent to parents by school administrators



Students who walk to school in La Crosse draw on maps to share problem spots.

Thank you!

Shaun Murphy-Lopez

608-462-3715

smurphylopez@tooledesign.com



Credit: City of Viroqua