

CITY OF VIROQUA Bicycle and Pedestrian Plan

(including Safe Routes to School)



Image Credit: Bluedog Cycles

Welcome Advisory Committee Members!

Organization or Interest Group	Confirmed Representative
City Plan Commission	Sonya Newenhouse
Historic Preservation Commission	Lucy Danforth
Local business owner or Chamber Main Street employee/board member	Chris Clemens
Mayoral appointee	Tim Keneipp
Member of the National Interscholastic Cycling Association	Gibson Wade
Member of the National Interscholastic Cycling Association	Calleigh Anderson
Parent who walks or bikes their child to school	Krista Browne
Parks & Recreation Director	Kale Proksch
Person who uses an assistive device	Ashley Parkhurst
Police department	Rick Niedfeldt
Public Works Committee	Todd Kirking
Resident who primarily bikes for transportation	Jennifer Morales
Resident who primarily drives for transportation	Roger Call
Resident who primarily walks for transportation	Ann Altland
School staff representative	Tom Burkhalter or his appointee
Senior who regularly walks or bikes	Charlie Knowler
Spanish speaking resident	Fede Escobar
UW Extension	Hannah Altimus
Vernon County Aging and Disability Resource Center	Brenda Olson
Vernon Trails	Alycann or Pete Taylor
Viroqua Tourism Commission	Justin Miller
Viroqua Westby Trail Committee	Arthur Bernstein
Youth Initiative High School	Rose Marinsen-Burrell

Today's meeting

- Committee context
- Overall purpose of plan
- Schedule
- Scope of work
- Your input on issues



Committee Context

- Created by Mayor Running and approved by City Council
- Temporary and advisory in nature
- Meetings are open to the public and agendas are advertised according to the Wisconsin open meetings law (i.e., discuss agenda items listed during meetings)

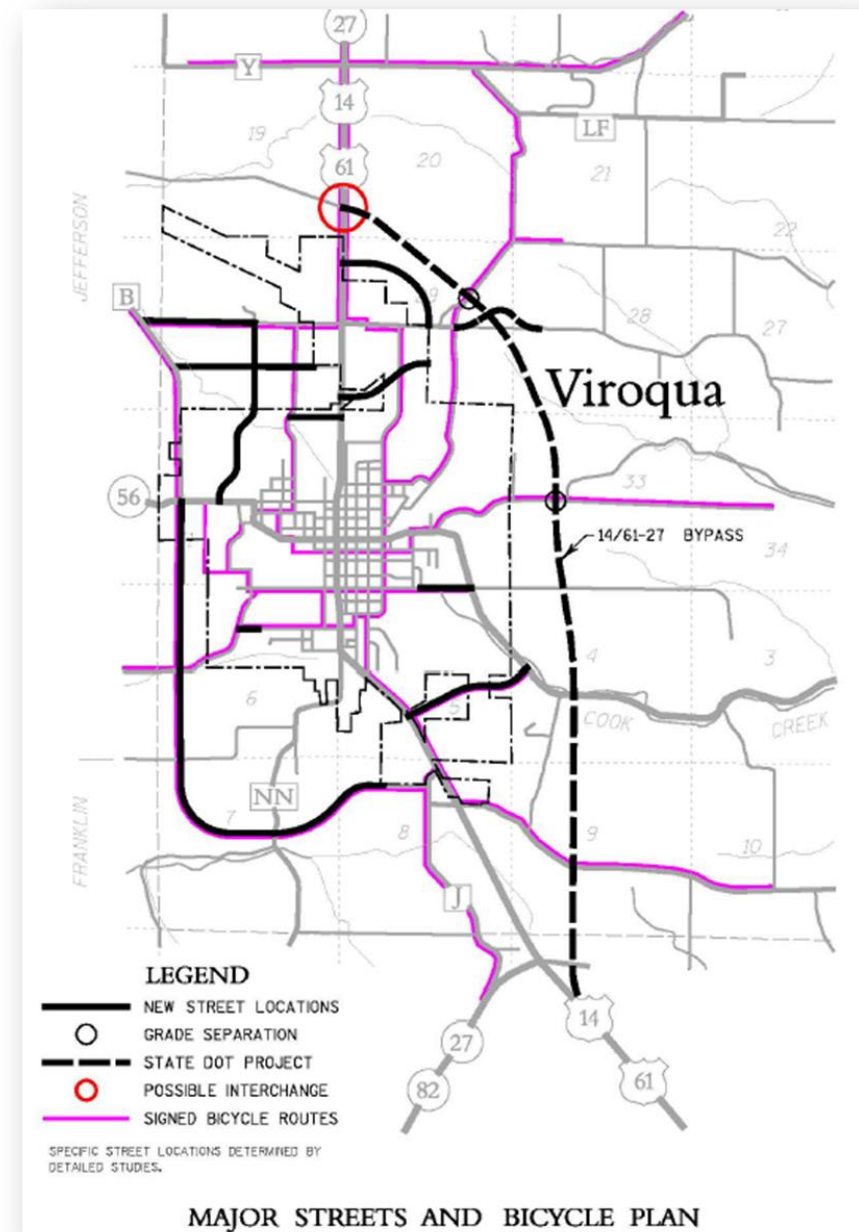


Plan purpose

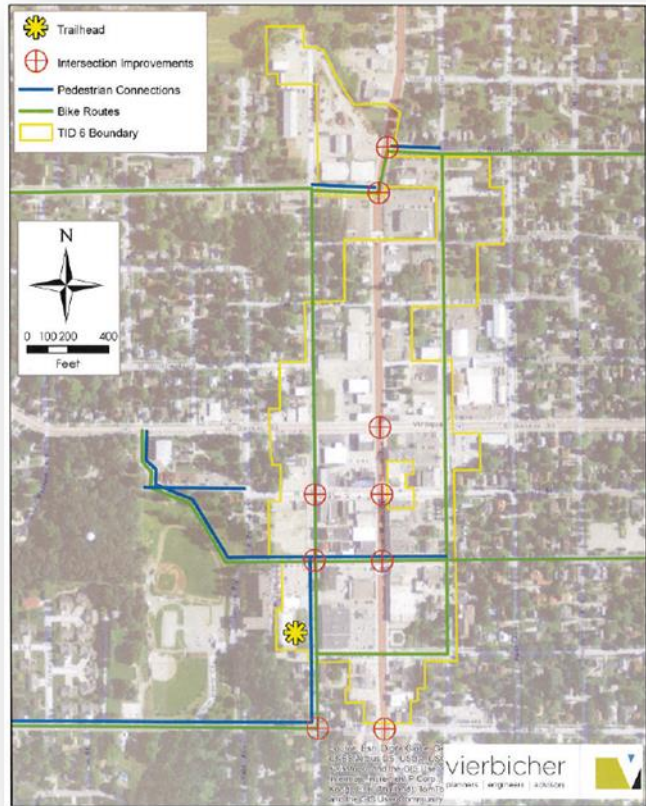
Help achieve some of the City's adopted Comprehensive Plan policies:

“Plan for the development of local and regional bicycle/pedestrian trails and paths along both local and intercommunity links and local designated bikeways including connections to local schools, parks, entertainment and commercial areas.”

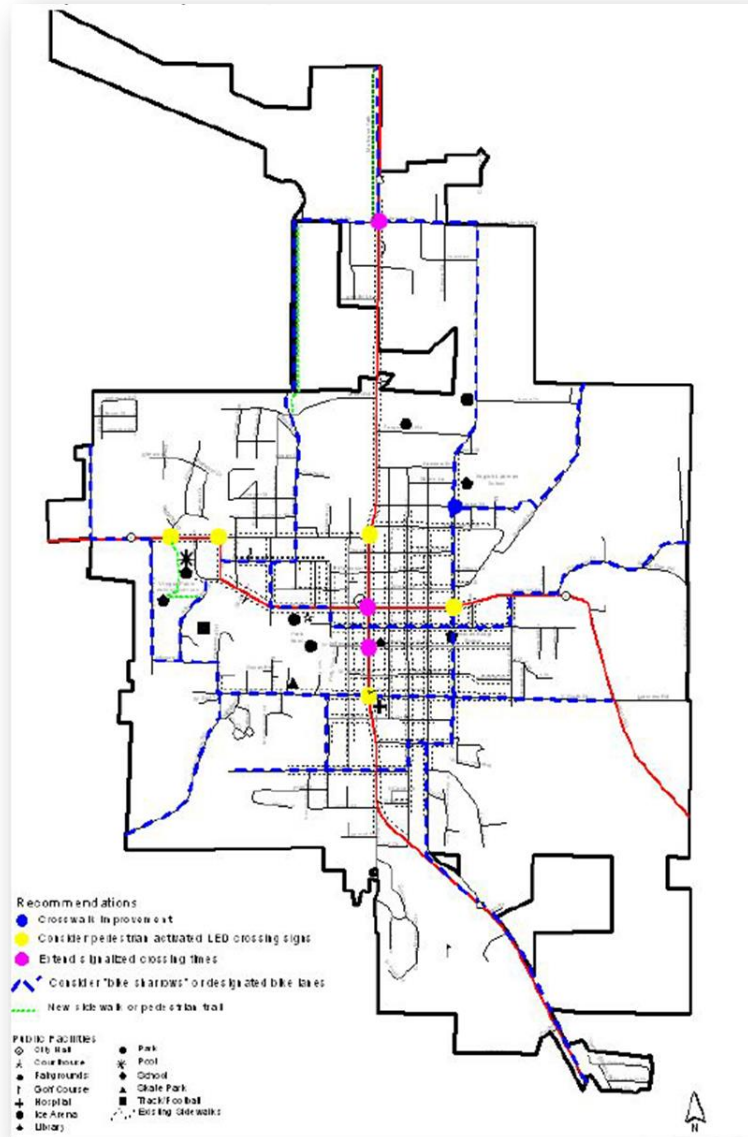
“Develop and implement a city sidewalk/pedestrian plan.”



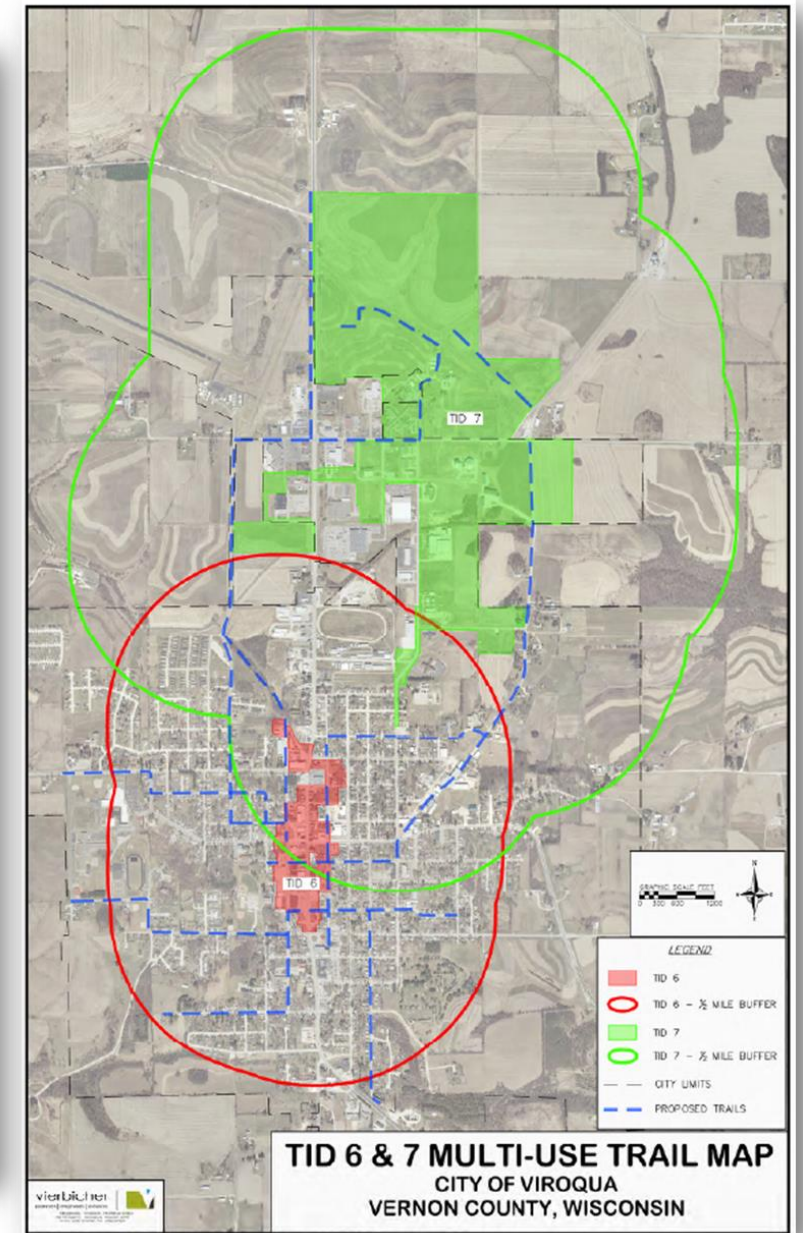
Additional previous bicycle and pedestrian facility planning



TID No. 6 Project Plan (2015) shows bike routes in green lines and pedestrian connections in blue lines



Safe Routes to School Plan (2011) shows “possible bike sharrows and designated bike lanes” in blue dashed lines, a new sidewalk or pedestrian trail in green lines, and pedestrian crossing improvements in yellow, blue, and pink dots



TID No. 7 Project Plan (2019) shows proposed trails in blue dashed lines

Accomplishments



Rock Avenue Shared Use Path



Viroqua Westby Trail



Pedestrian Rapid Flash Beacons



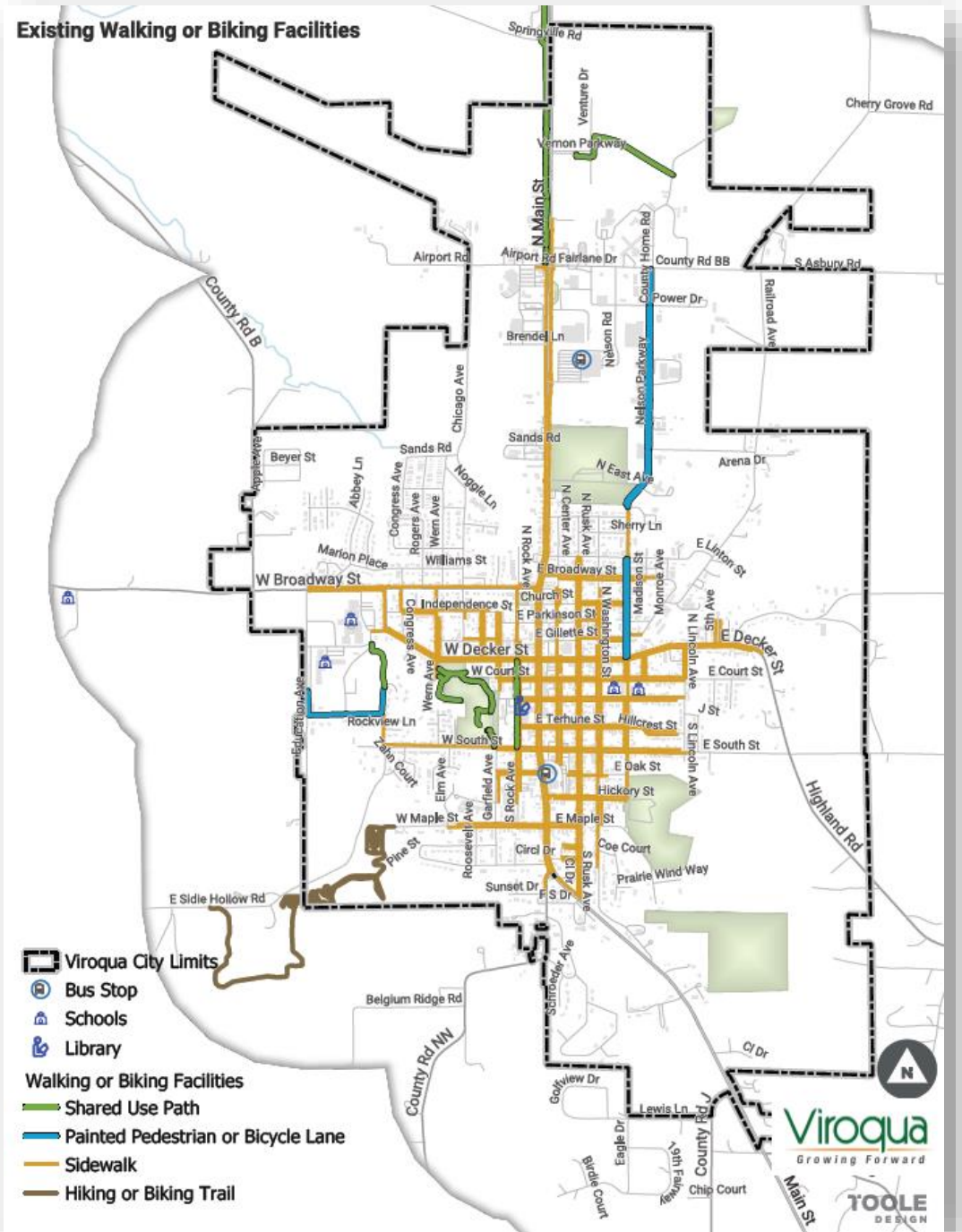
N East Avenue Bike Lanes

City of Viroqua Bicycle and Pedestrian Plan and SRTS Addendum Schedule

	September	October	November	December	January	February	March	April	May
Task 1: Project Management									
1.1 Project Management Plan									
1.2 Bi-weekly Meetings									
1.3 Monthly Invoices									
Task 2: Review of Existing Demographics, Facilities, and Plans									
2.1 Demographics and Facilities									
2.2 Plans, Programs, and Other Documents									
Task 3: Bike and Pedestrian Suitability Analysis									
3.1 Bike and Pedestrian Suitability Analysis									
Task 4: Public Engagement									
4.1 Public Engagement Plan									
4.2 City Council Informational Presentation									
4.3 Advisory Committee									
4.4 Public Meetings, Focus Groups, and Online Survey									
Task 5: Bike and Pedestrian Plan and SRTS Addendum									
5.1 Goals, Objectives, Policies									
5.2 Network									
5.3 Implementation									
5.4 Draft and Final Plan									
Toole Design On-Site (may occur more often due to close proximity of Project Manager)									

Existing facility mapping

A draft map showing bicycle and pedestrian paths, lanes, walks, and trails in Viroqua



Existing facility types

- Shared use path



Shared Use Path on Rock Avenue

Existing facility types

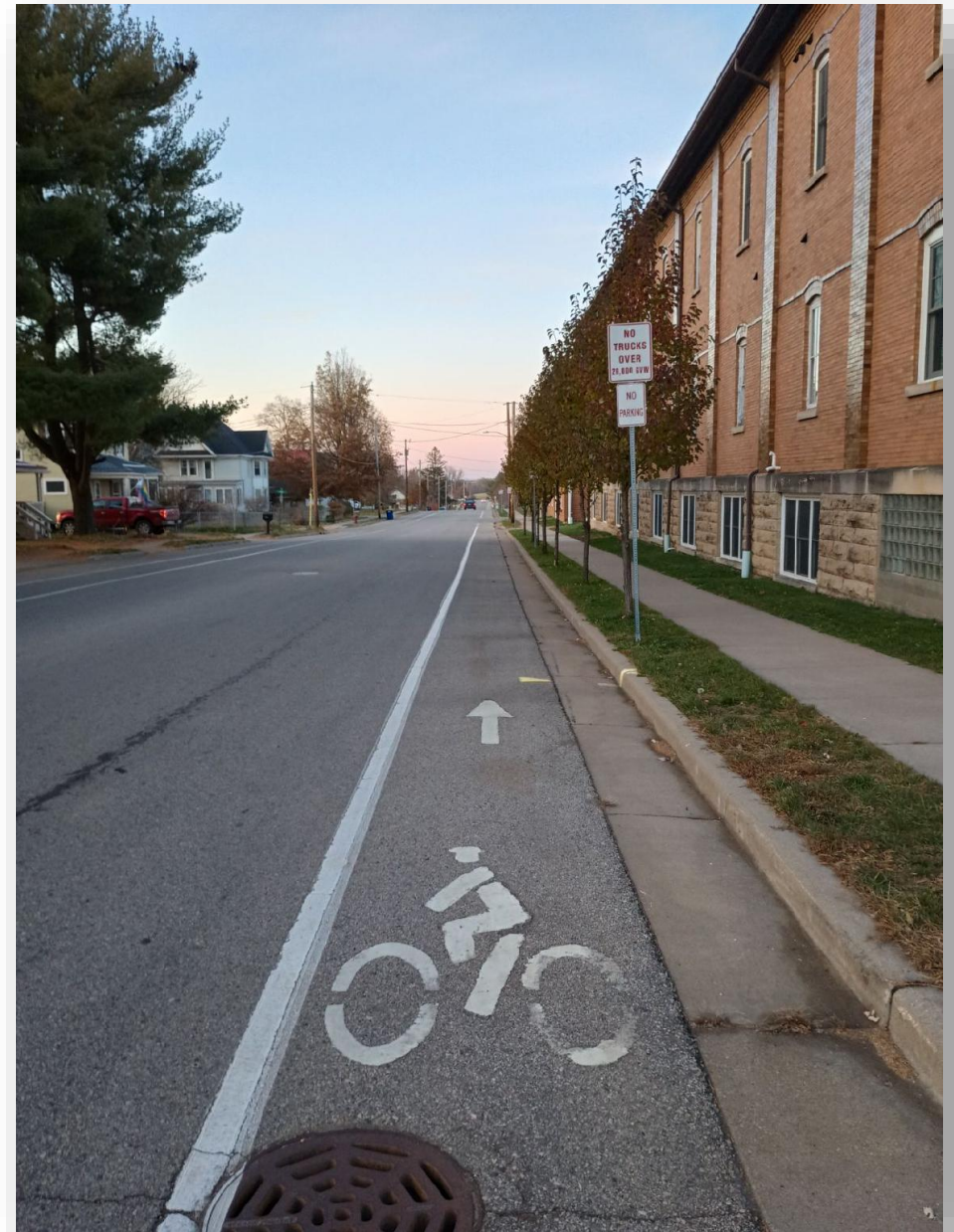
- Shared use path
- Painted pedestrian lane



Painted pedestrian lane on Parkwood Trail

Existing facility types

- Shared use path
- Painted pedestrian lane
- Painted bicycle lane



Painted bicycle lane on N East Avenue

Existing facility types

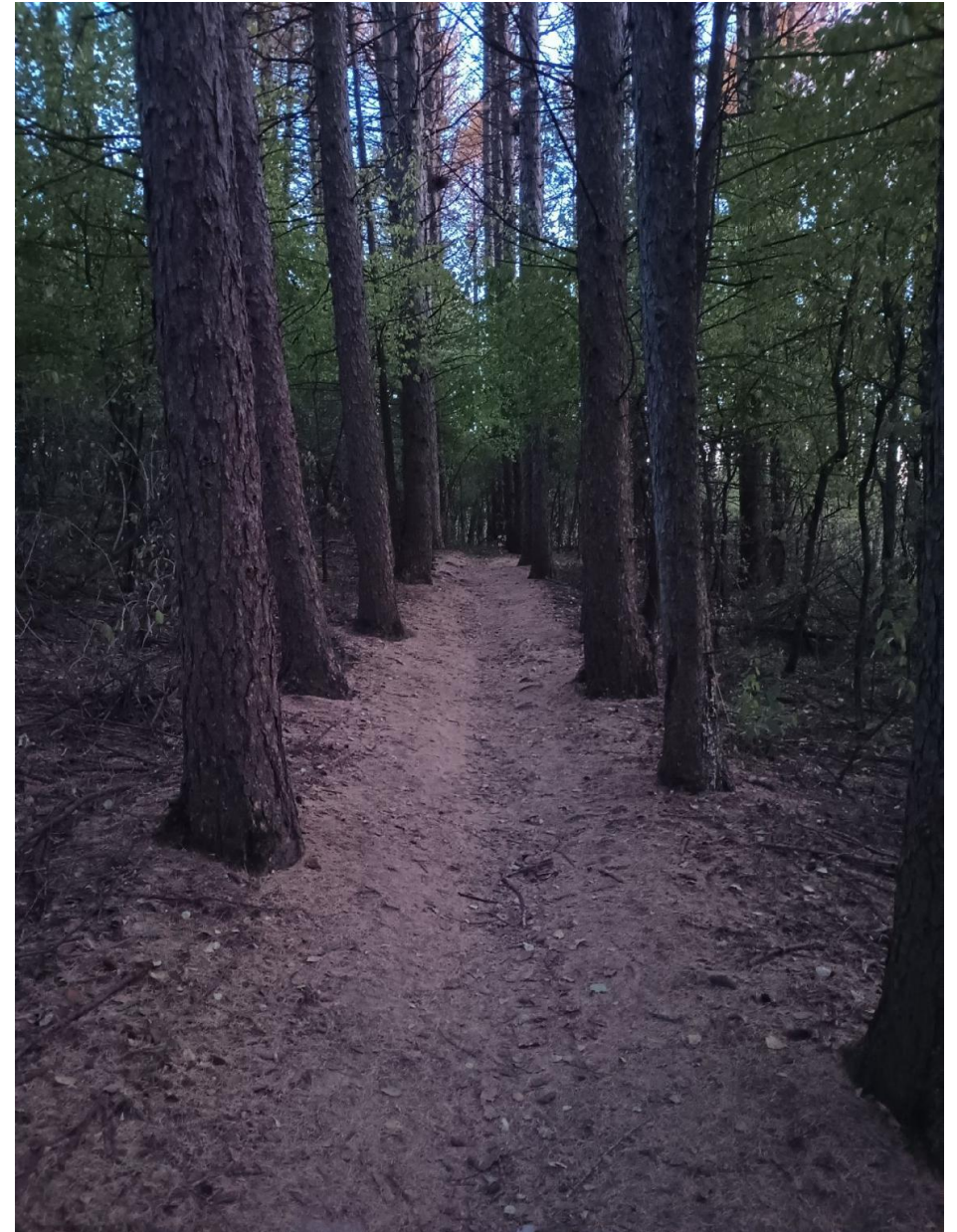
- Shared use path
- Painted pedestrian lane
- Painted bicycle lane
- Sidewalk



Sidewalk on E Court Street

Existing facility types

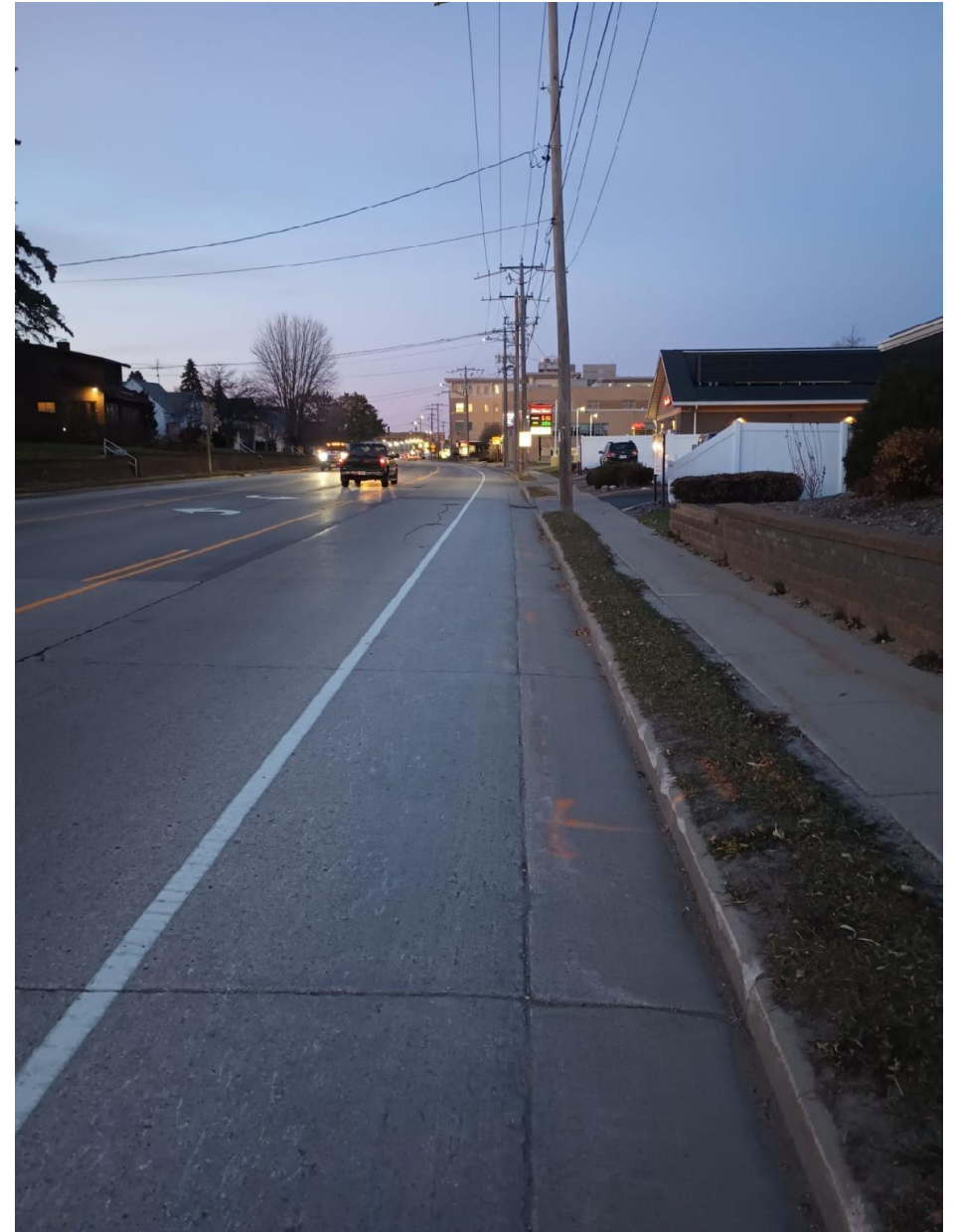
- Shared use path
- Painted pedestrian lane
- Painted bicycle lane
- Sidewalk
- Hiking or biking trail



Hiking or biking trail in Hubbard Hills

Existing facility types

- Shared use path
- Painted pedestrian lane
- Painted bicycle lane
- Sidewalk
- Hiking or biking trail
- Painted shoulder *(not on map)*



A painted shoulder on Main Street

Other facility types

- Other facility types will be reviewed in more detail at our next meeting

Examples of bicycle facility types for the Cedar Rapids, IA Trails & Bikeways Plan

Separated Facilities



One-way separated bike lane at street level

A one-way bicycle lane on the street level between curbs



Shared use path along a 4-lane road

A paved area separated from motorists by a curb and vegetation



Paved shared use path along a greenway

An area away from roads surrounded by nature and open space



Unpaved shared use path along a greenway

An area away from roads surrounded by nature and open space



Two-way separated bike lanes at sidewalk level

A two-way bicycle lane on the sidewalk level between a sidewalk on the left and grass turf on the right, with driveways marked with green pavement



One-way separated bike lane at sidewalk level

A one-way bicycle lane on the sidewalk level between a paved boulevard on the left and sidewalk on the right

Unseparated Facilities



Bike lane (painted)

A lane on a street between white lines



Shoulder on a 2-lane street

A lane on a street between a white line and a curb (parking may be allowed)



Shared lane markings on a 5-lane road

Bicycle symbols with two chevron markings on the right side of a travel lane



Shared lane markings on a 2-lane road

Bicycle symbols with chevron markings between dashed white lines in the center of a travel lane



Shoulder along a 4-lane road

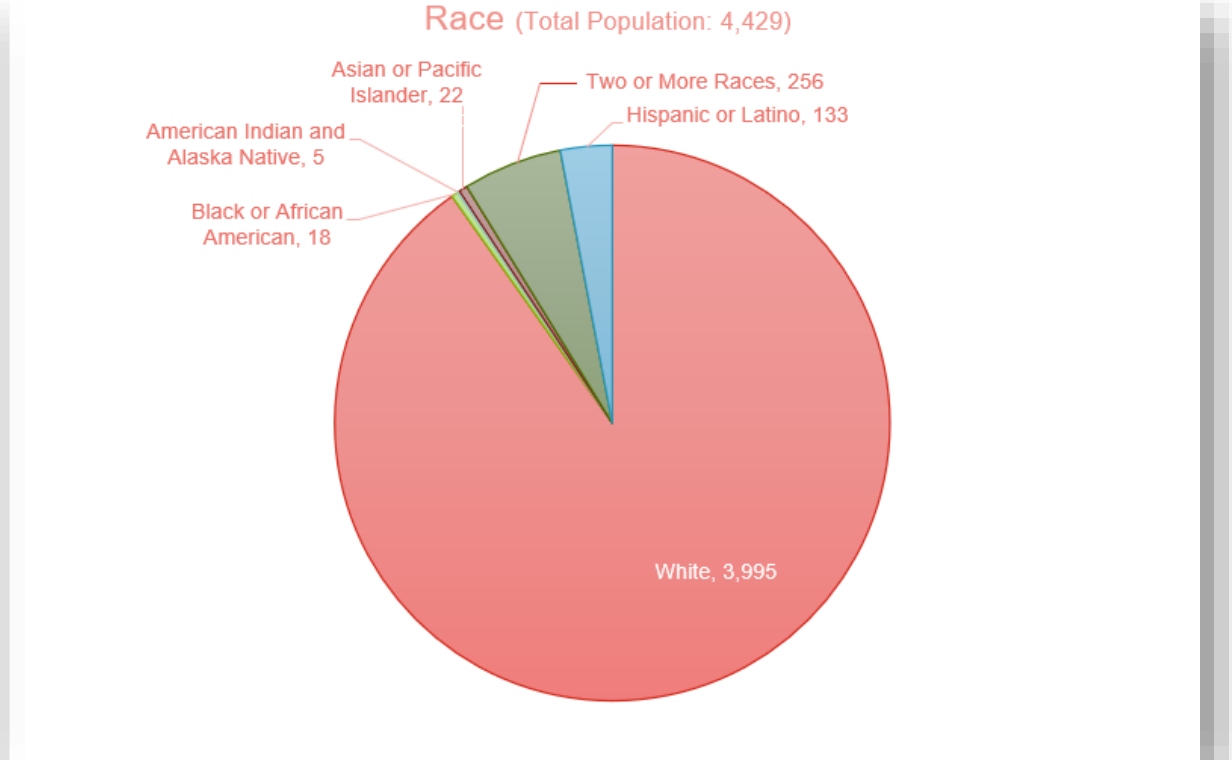
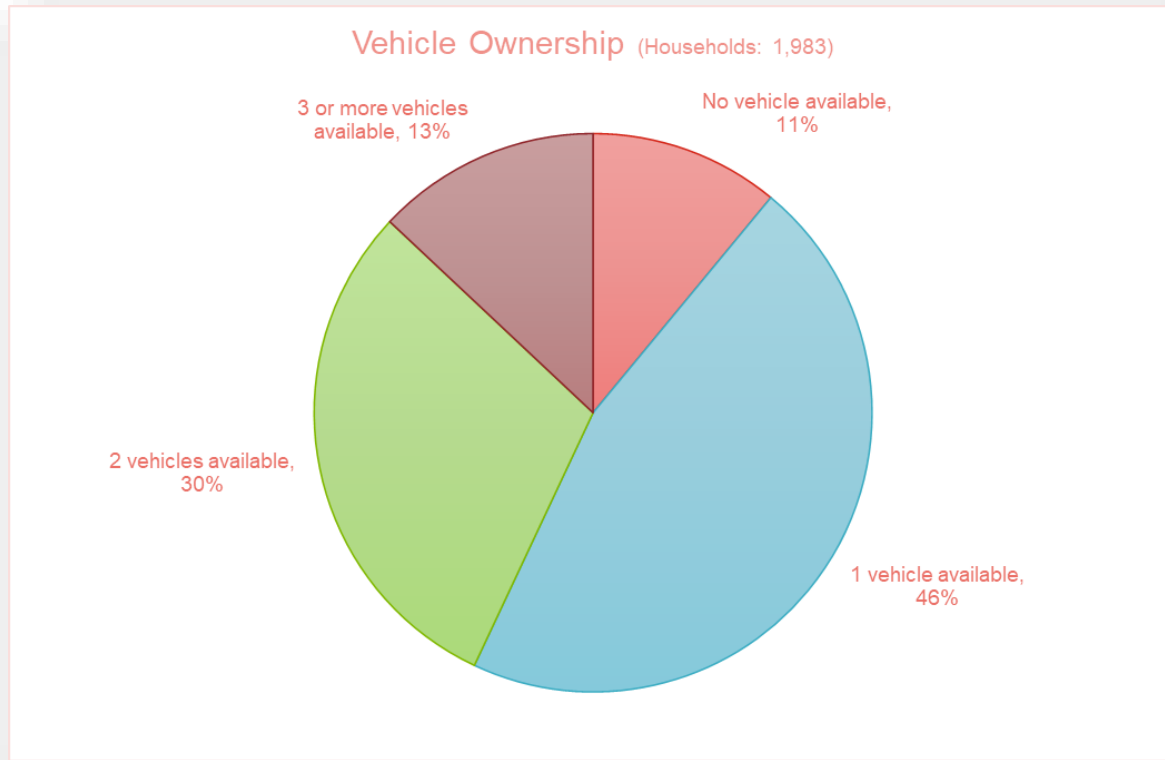
A lane on a road between a white line/rumble strip and vegetation



Bicycle boulevard

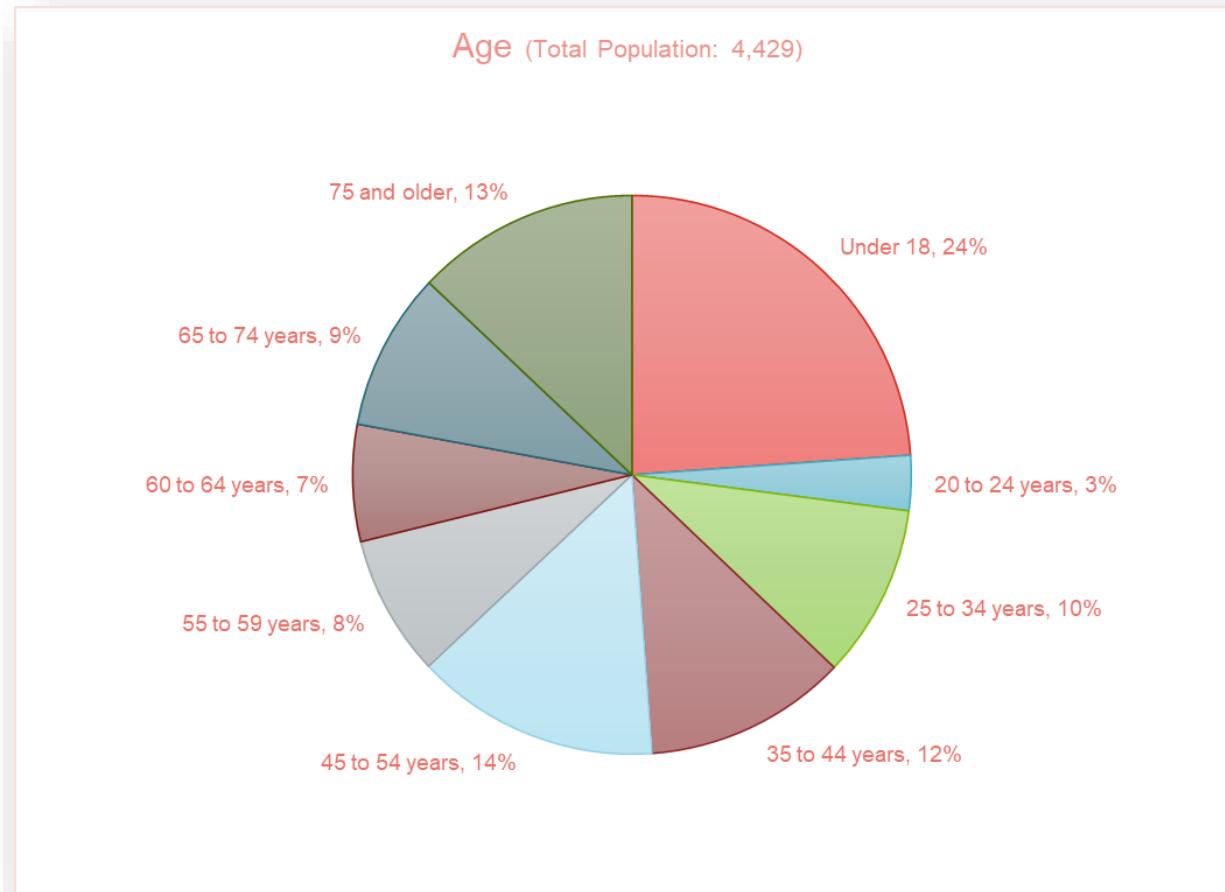
Bicycle symbols with boulevard markings on a low traffic street without marked travel lanes

Viroqua demographics



Asking survey respondents about vehicle ownership and race can determine if we're reaching an accurate cross section of Viroqua residents

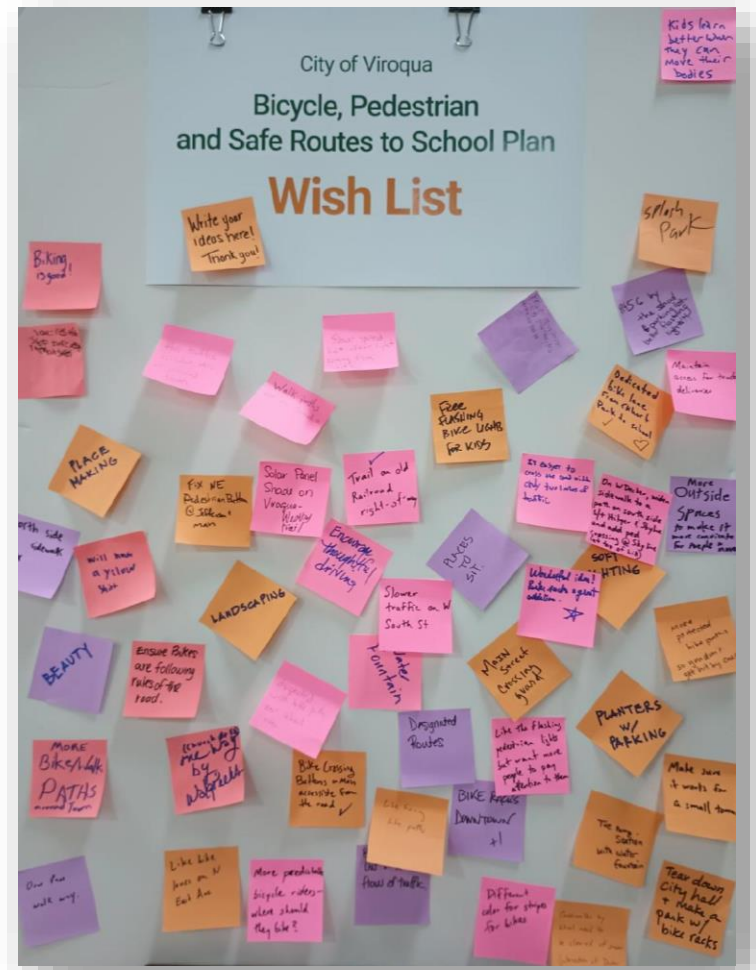
Viroqua demographics



Asking survey respondents about age can determine if we're reaching an accurate cross section of Viroqua residents

Public Engagement Plan *(approved by Public Works Committee)*

- Advisory committee
- Project website
- Online survey
- Open house
- Tabling
- School-focused outreach

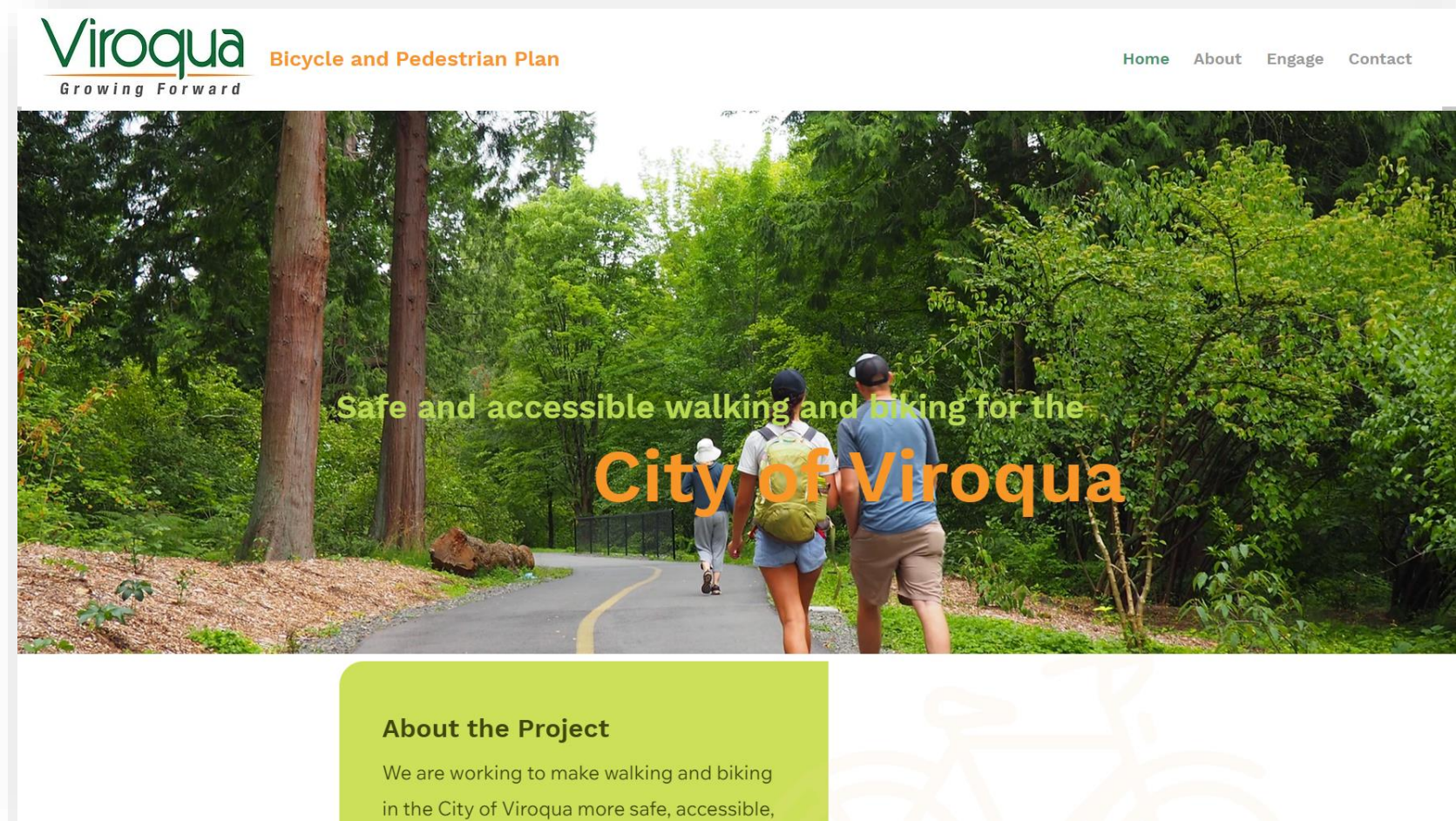


Advisory Committee (AC) Schedule & Role

Approximate meeting date	Meeting purpose
November	Share the planning process and schedule with the AC; Learn about goals, issues, and opportunities from AC
December	Solicit feedback from the AC on the recommended approach for public engagement
February	Review community feedback and ask the AC for input on how to prioritize projects
April	Review and comment on the draft plan

Project website

- Home
- About
- Engage
- Contact
- Email sign-up list



Project website documents



Project Documents

Click on the document titles below to access the linked plans.

18 Oct 2023: [Public Engagement Plan](#)

17 Oct 2023: [Viroqua Public Works Committee Presentation](#)

12 Oct 2023: [Demographics Summary](#)

10 Oct 2023: [Summary of Plans](#)

Online survey

- 30 – 45 days
- Survey on the left, mapping on the right

You and the Community

Overall, how safe do you feel while traveling along this segment of South George Mason Drive using the following types of transportation?

Walking/Rolling
Very Unsafe Unsafe Neutral Safe Very Unsafe Not Applicable

Taking Public Transit
Very Unsafe Unsafe Neutral Safe Very Unsafe Not Applicable

Riding a Bike
Very Unsafe Unsafe Neutral Safe Very Unsafe Not Applicable

Riding Scooter
Very Unsafe Unsafe Neutral Safe Very Unsafe Not Applicable

Driving a personal Vehicle
Very Unsafe Unsafe Neutral Safe Very Unsafe Not Applicable

A project is most important to me if it (RANK ORDER FOR AS MANY AS YOU WOULD LIKE):

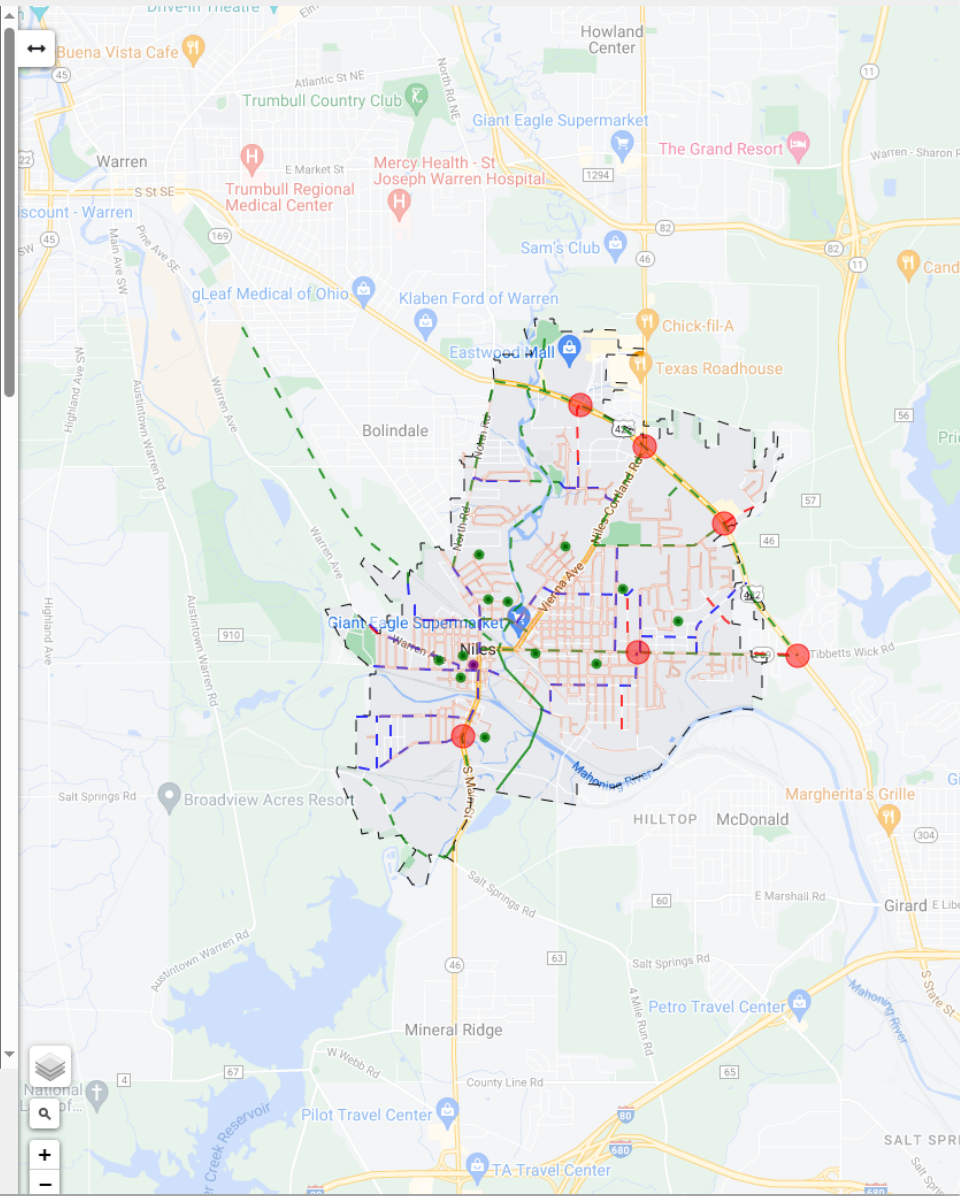
- Slows down cars (traffic calming) →
- Adds crosswalks and safer intersections for pedestrians →
- Adds bicycle lanes →
- Adds bus lanes and improves bus stops →
- Reduces traffic congestion →
- Adds street trees and places to sit →

Drag and drop your selections here.

Don't want to share your information?
[Skip ahead to the map.](#)

Select Language ▼

Map Tiles © Google | Leaflet | TOOLE DESIGN



The map displays a network of streets in the Warren, Ohio area, with several routes highlighted in different colors (red, blue, green, purple). Landmarks such as Trumbull Regional Medical Center, Mercy Health - St. Joseph Warren Hospital, and Giant Eagle Supermarket are visible. The map includes a search bar, zoom controls, and a scale bar.

Online survey

- 30 – 45 days
- Survey on the left, mapping on the right
- Respondents can draw and comment on points, lines, and polygons

Walking and Biking in Example City

Use the "Comment on Proposals" tab to comment on proposed walking and biking routes as well as proposed spot improvements. Use the "Additional Feedback" tab to add your own points and lines with comments including any information you would like us to know about those locations

Comment on Proposals Additional Feedback

Thanks for reviewing the current proposals for improving walking and biking!

See what others have shared.

All done? Simply close your browser when you're finished leaving comments.

Proposed Route Improvements
(Click a feature to leave a comment on it.)

- - On Street Bikeway
- - Sidewalk
- - Trail

Proposed Spot Improvement
(Click a feature to leave a comment on it.)

- Crossing

The map displays a city grid with several colored lines and points. A yellow dashed line represents an 'On Street Bikeway' route. Blue dashed lines represent 'Sidewalk' improvements. Green dashed lines represent 'Trail' improvements. Red dots represent 'Crossing' spot improvements. The map includes labels for streets like Niles Rd SE, Warren Ave, and Robbers Ave, and landmarks like Waddell Park, Warren Wildlife Area, and various businesses like McDonald's and Giant Eagle Supermarket.

Online survey

- 30 – 45 days
- Survey on the left, mapping on the right
- Respondents can draw and comment on points, lines, and polygons
- Respondents can click on select intersections and give input

Screenshot of an online survey gathering input about bicycling and walking

Open house

- Target date of mid-January at City Hall
- Materials will mimic online survey
- Great opportunity for residents to discuss ideas and questions with the project team



An open house for a trail plan in Polk County, WI

Tabling event

- **Location:** Viroqua Farmers' Market, McIntosh Memorial Library, Nelson's Agri-Center Ace Hardware
- **Date/Time:** Saturday, October 28th from 8am to 2pm
- **Format:** Share a blank poster that says, "Viroqua Bicycle, Pedestrian, and Safe Routes to School Wish List"
- **Long-term tabling:** Viroqua Food Co-op and Library



School-focused outreach

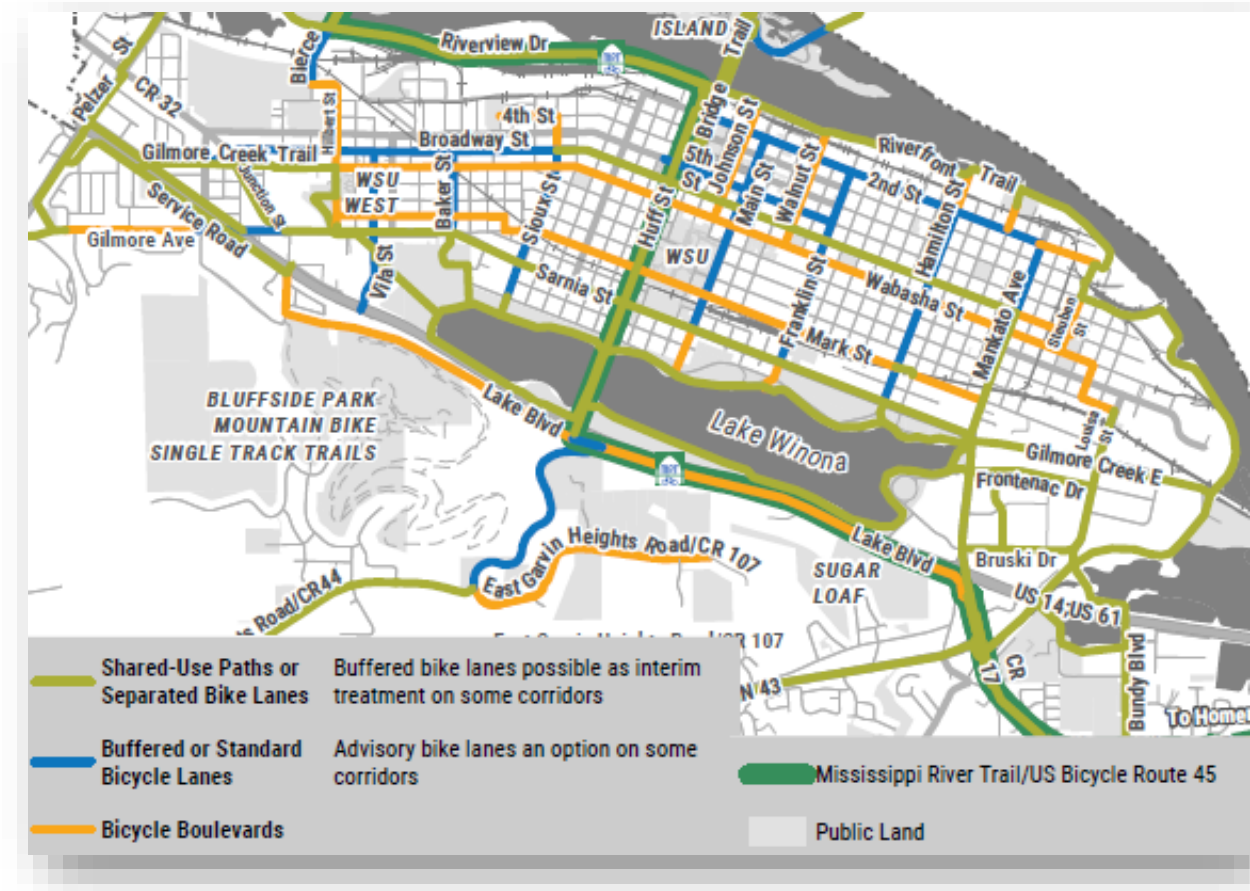
- **Option A (two group gatherings)**
 - Meeting to share observations, ideas, questions
 - Walk along a route to generate ideas for improvement
- **Option B (one online survey)**
 - Tailored to kids
 - Sent to parents by school administrators



Students who walk to school in La Crosse draw on maps to share problem spots.

What will the plan likely include?

- Goals, objectives, policies
- Network recommendations
- Schedule for implementation of goals and projects
- Cost estimates and funding sources
- Draft and final plan



An example network plan from Winona, MN.

Your thoughts

- What are strengths, weaknesses, opportunities, and threats regarding bicycling and walking in Viroqua?



Image Credit: La Crosse Tribune.

Your thoughts about bicycling and walking in Viroqua

- **Strengths:** *What does Viroqua do well? What do other communities see as your strengths?*
- **Weaknesses:** *What could Viroqua improve? Where are there fewer resources than other communities?*
- **Opportunities:** *What trends could Viroqua take advantage of? How can strengths be turned into opportunities?*
- **Threats:** *What could harm the development of bicycling and walking in Viroqua?*

Thank you!

Sarah Grainger

608-637-2937

sgrainger@viroqua-wisconsin.com

Shaun Murphy-Lopez

608-462-3715

smurphylopez@tooledesign.com

TOOLE
DESIGN

Viroqua
Growing Forward